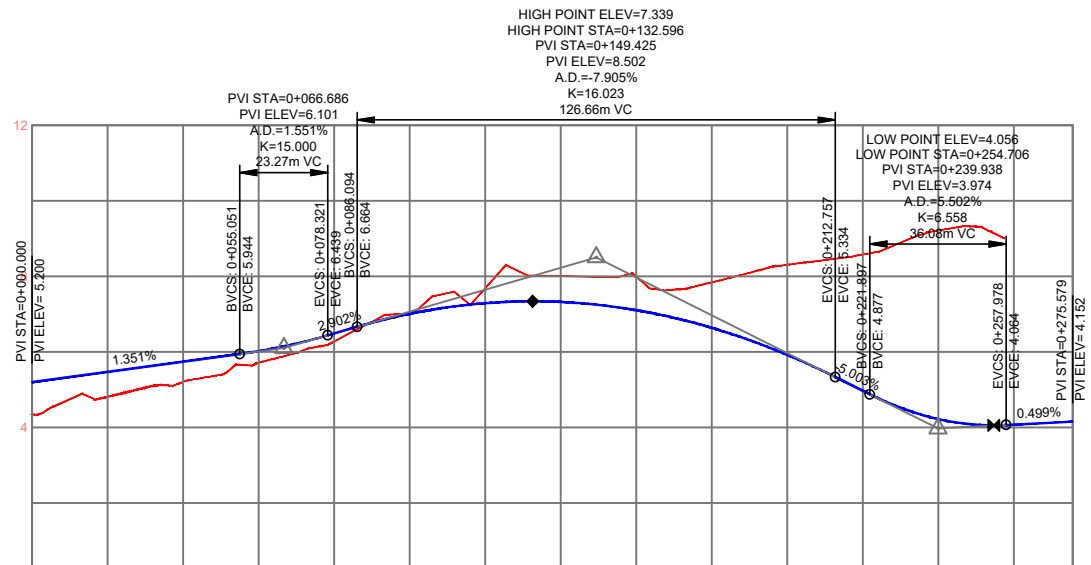




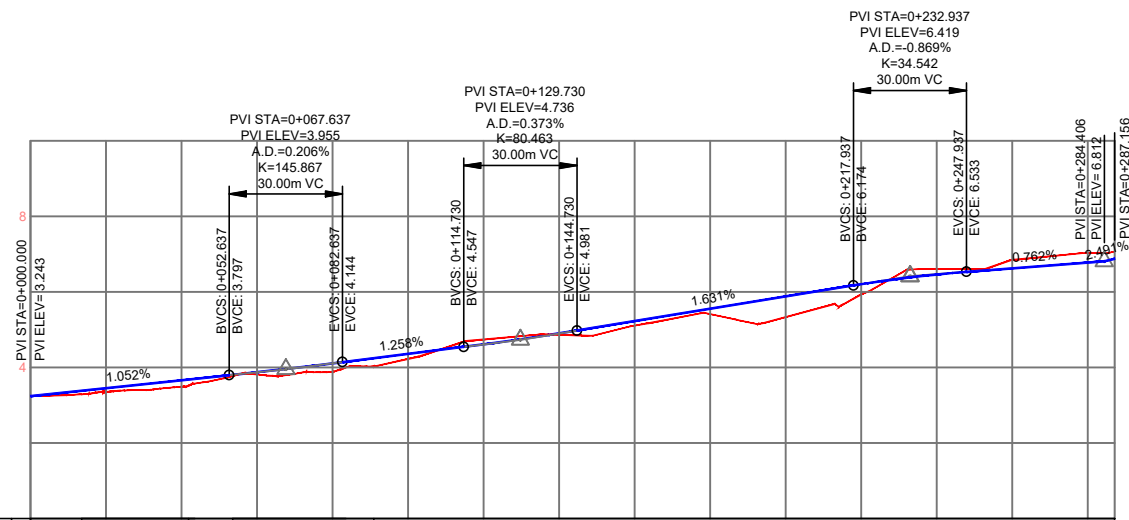


R:\MCW1088 - BAM Castlelake Residential D\p18.0 Drawings\GEMC\W1088-RPS-00-XX-DR-C-GE0101.dwg



HORIZONTAL ALIGNMENT		STRAIGHT	LE=2.50%	STRAIGHT	LE=-2.50%	STRAIGHT	LE=-2.50%	STRAIGHT	LE=-2.50%	STRAIGHT						
		L=21.204	L=57.58 R=82.25	L=95.346	L=31.76 R=93.75	L=30.891	L=150.00 R=150.00	L=150.00 R=150.00	L=22.443							
CROSS FALL & SUPERELEVATION		-														
VERTICAL GEOMETRY		SAG CURVE L=23.270 G=1.351% L=55.05		CREST CURVE L=126.663				SAG CURVE L=36.081 G=-0.499%		SAG CURVE L=17.877 G=0.499%						
FINISHED ROAD LEVELS		5.200	5.470	5.740	6.019	6.487	7.007	7.290	7.322	7.105	6.638	5.921	4.971	4.221	4.074	4.152
EXISTING GROUND LEVELS		4.353	4.812	5.206	5.712	6.273	6.487	7.019	7.682	7.322	7.988	7.840	8.307	8.581	9.212	9.212
CHAINAGE		0+000.000	0+020.000	0+040.000	0+060.000	0+080.000	0+100.000	0+120.000	0+140.000	0+160.000	0+180.000	0+200.000	0+220.000	0+240.000	0+260.000	0+275.579

MR01 0+000.000 to 0+275.579  
Scale 1:1000 Horz. 1:100 Vert.



HORIZONTAL ALIGNMENT		STRAIGHT	LE=-2.50%	STRAIGHT	LE=-2.50%	STRAIGHT	LE=-2.50%	STRAIGHT	LE=-2.50%	STRAIGHT						
		L=13.52	L=28.35 R=47.00	L=11.63	L=37.37 R=43.00	L=196.223	L=30.000	L=30.000	L=30.000	L=36.47						
CROSS FALL & SUPERELEVATION		-														
VERTICAL GEOMETRY		SAG CURVE L=52.64 G=1.052%		SAG CURVE L=30.000 G=1.258%		SAG CURVE L=30.000 G=1.631%		CREST CURVE L=30.000 G=0.762%		SAG CURVE L=36.47 G=0.441%						
FINISHED ROAD LEVELS		3.243	3.454	3.654	3.876	4.111	4.362	4.615	4.905	5.230	5.556	5.882	6.208	6.464	6.625	6.778
EXISTING GROUND LEVELS		3.243	3.358	3.495	3.814	3.885	4.228	4.745	4.871	4.905	5.110	5.417	5.334	5.849	6.611	7.031
CHAINAGE		0+000.000	0+020.000	0+040.000	0+060.000	0+080.000	0+100.000	0+120.000	0+140.000	0+160.000	0+180.000	0+200.000	0+220.000	0+240.000	0+260.000	0+287.156

MR02 0+000.000 to 0+287.156  
Scale 1:1000 Horz. 1:100 Vert.

Client



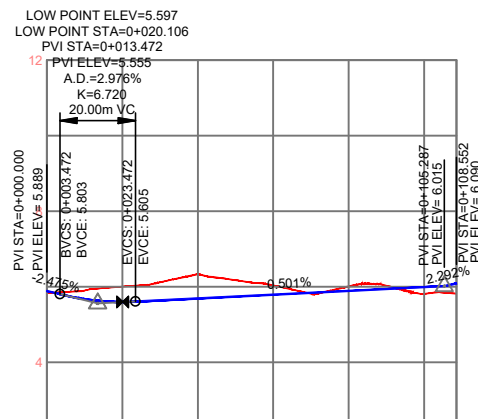
General Notes

- (i) Hard copies, dwf and pdf will form a controlled issue of the drawing. All other formats (dwg etc.) are deemed to be an uncontrolled issue and any work carried out based on these files is at the recipient's own risk. RPS will not accept any responsibility for any errors from the use of these files, either by human error or by the recipient, listing of the un-dimensioned measurements, compatibility with the recipient's software, and any errors arising when these files are used to aid the recipient's drawing production, or setting out on site.
- (ii) DO NOT SCALE, use figured dimensions only.
- (iii) This drawing is the property of RPS, it is a project confidential classified document. It must not be copied used or its contents divulged without prior written consent. The needs and expectations of client and RPS must be considered when working with this drawing.
- (iv) Information including topographical survey, geotechnical investigation and utility detail used in the design have been provided by others.
- (v) All Levels refer to Ordnance Survey Datum, Malin Head.

Rev	Date	Drawn	Checked	Amendment / Issue	App
S4 P01	08/06/22	[Signature]	[Signature]	Issue for Planning	[Signature]
S3 P01	23/05/22	[Signature]	[Signature]	Issue for Review and Comment	[Signature]
P01	26/10/21	[Signature]	[Signature]	Pre-Planning Submission	[Signature]



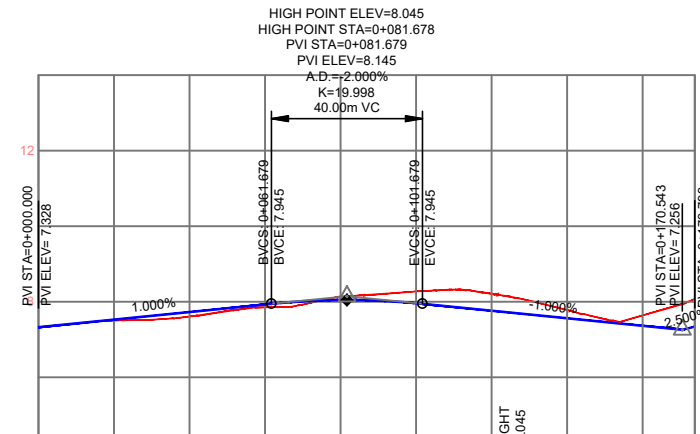
Scale	As Shown @ A1 Half @ A3	Project	Castlelake SHD
Created on	13/10/2021	Title	Geometrics Main Road MR01 & MR02 Profiles
Sheets	01 of 05	Status	S4
Model File Identifier	MCW1088-RPS-00-XX-DR-C-GE0101	Rev	P01



DATUM LEVEL 2.00

HORIZONTAL ALIGNMENT	STRAIGHT L=23.028	SAG CURVE L=89.53 R=151.46	STRAIGHT L=15.997
CROSS FALL & SUPERELEVATION	LE=-2.50% RE=-2.50%		
VERTICAL GEOMETRY	SAG CURVE L=20.000 G=-0.501% L=81.81		
FINISHED ROAD LEVELS	5.889	5.897	5.888
EXISTING GROUND LEVELS	5.839	6.000	5.788
CHAINAGE	0+000.000	0+108.552	0+108.552

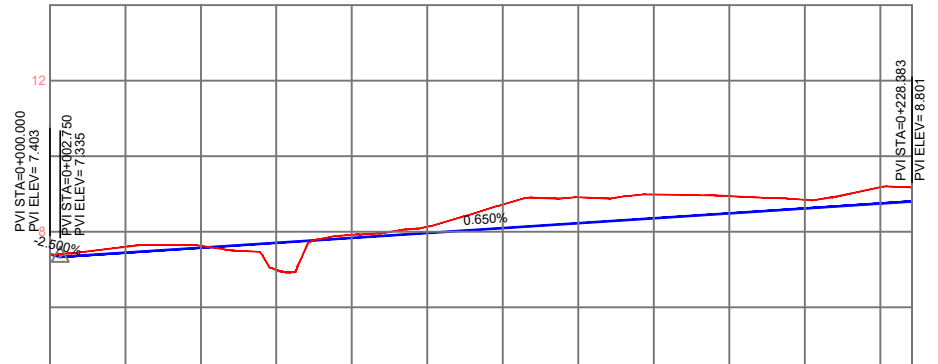
SR01 0+000.000 to 0+108.552  
Scale 1:1000 Horz. 1:100 Vert.



DATUM LEVEL 4.00

HORIZONTAL ALIGNMENT	STRAIGHT L=101.212	CREST CURVE L=40.000	STRAIGHT L=11.045	STRAIGHT L=41.110
CROSS FALL & SUPERELEVATION	LE=-2.50% RE=-2.50%			
VERTICAL GEOMETRY	G=1.000% L=61.69 G=-1.000% L=68.86			
FINISHED ROAD LEVELS	7.328	7.528	7.961	7.337
EXISTING GROUND LEVELS	7.328	7.500	7.781	7.337
CHAINAGE	0+000.000	0+173.793	0+173.793	0+173.793

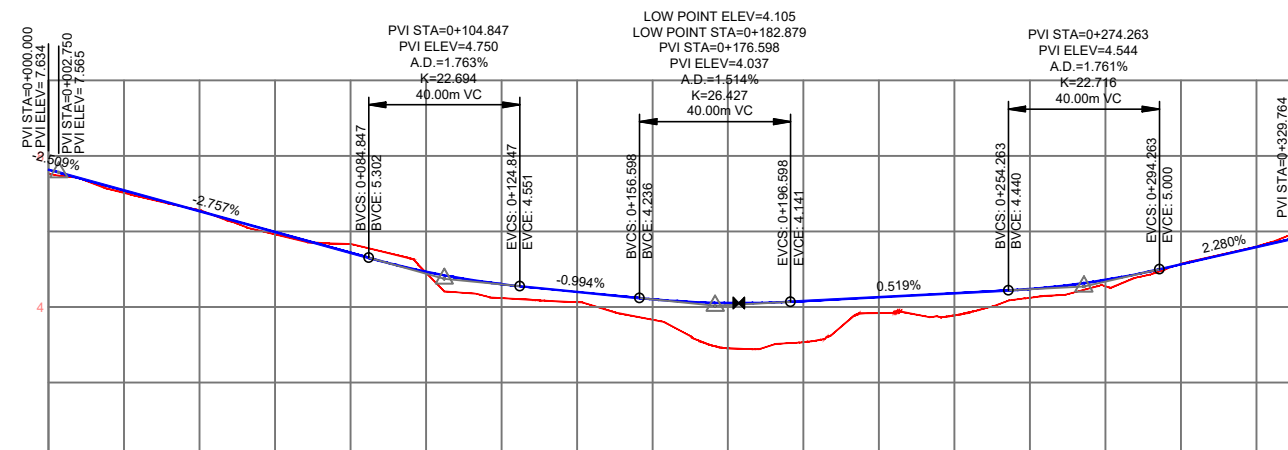
SR02 0+000.000 to 0+173.793  
Scale 1:1000 Horz. 1:100 Vert.



DATUM LEVEL 4.00

HORIZONTAL ALIGNMENT	STRAIGHT L=59.314	STRAIGHT L=162.394
CROSS FALL & SUPERELEVATION	LE=-2.50% RE=-2.50%	
VERTICAL GEOMETRY	SAG CURVE L=225.63 G=0.650%	
FINISHED ROAD LEVELS	7.403	8.801
EXISTING GROUND LEVELS	7.391	8.166
CHAINAGE	0+000.000	0+228.383

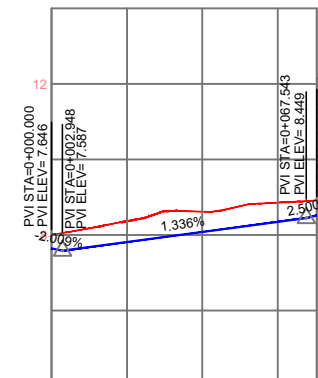
SR03 0+000.000 to 0+228.383  
Scale 1:1000 Horz. 1:100 Vert.



DATUM LEVEL 0.00

HORIZONTAL ALIGNMENT	STRAIGHT L=170.528	STRAIGHT L=18.162	STRAIGHT L=31.189	STRAIGHT L=9.3	STRAIGHT L=82.576
CROSS FALL & SUPERELEVATION	LE=-2.50% RE=-2.50%				
VERTICAL GEOMETRY	SAG CURVE L=82.10 G=-2.757%	SAG CURVE L=40.000 G=-0.994%	SAG CURVE L=40.000 G=0.519%	SAG CURVE L=40.000 G=2.280%	SAG CURVE L=35.50 G=2.280%
FINISHED ROAD LEVELS	7.634	4.605	4.107	4.131	5.809
EXISTING GROUND LEVELS	7.527	4.239	3.841	4.550	5.587
CHAINAGE	0+000.000	0+329.764	0+329.764	0+329.764	0+329.764

SR04 0+000.000 to 0+329.764  
Scale 1:1000 Horz. 1:100 Vert.



DATUM LEVEL 4.00

HORIZONTAL ALIGNMENT	STRAIGHT L=70.293
CROSS FALL & SUPERELEVATION	LE=-2.50% RE=-2.50%
VERTICAL GEOMETRY	SAG CURVE L=64.59 G=1.336%
FINISHED ROAD LEVELS	7.646
EXISTING GROUND LEVELS	7.594
CHAINAGE	0+000.000

SR05 0+000.000 to 0+070.293  
Scale 1:1000 Horz. 1:100 Vert.

R:\MCW\088 - BAM Castlelake Residential Dwg\8.0 Drawings\GEMC\W1088-RPS-00-XX-DR-C-GE0101.dwg



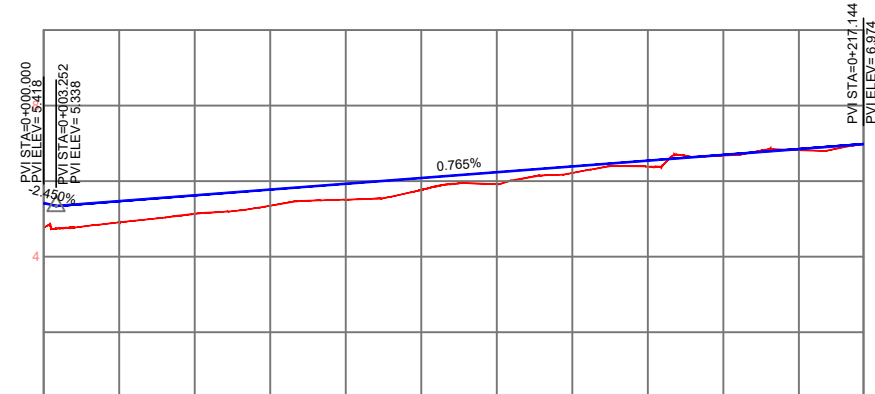
General Notes

- (i) Hard copies, dwf and pdf will form a controlled issue of the drawing. All other formats (dwg etc.) are deemed to be an uncontrolled issue and any work carried out based on these files is at the recipient's own risk. RPS will not accept any responsibility for any errors from the use of these files, either by human error by the recipient, listing of the un-dimensioned measurements, compatibility with the recipient's software, and any errors arising when these files are used to aid the recipient's drawing production, or setting out on site.
- (ii) DO NOT SCALE, use figured dimensions only.
- (iii) This drawing is the property of RPS, it is a project confidential classified document. It must not be copied used or its contents divulged without prior written consent. The needs and expectations of client and RPS must be considered when working with this drawing.
- (iv) Information including topographical survey, geotechnical investigation and utility detail used in the design have been provided by others.
- (v) All Levels refer to Ordnance Survey Datum, Malin Head.

Rev	Date	Drawn	Checked	Amendment / Issue	App
S4 P01	08/06/22			Issue for Planning	
S3 P01	23/05/22			Issue for Review and Comment	
P01	26/10/21			Pre-Planning Submission	

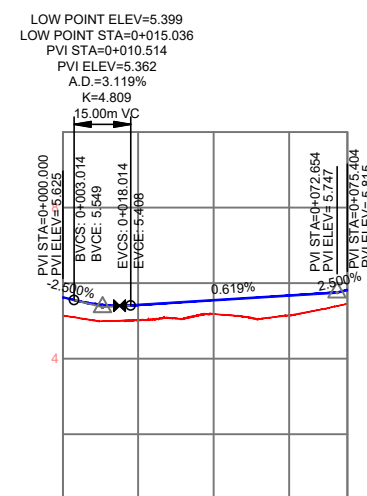


Scale	As Shown @ A1 Half @ A3	Project	Castlelake SHD
Created on	13/10/2021	Title	Geometrics Side Road SR01 To SR05 Profiles
Sheets	02 of 05	Status	S4
Model File Identifier	MCW1088-RPS-00-XX-DR-C-GE0101	Rev	P01



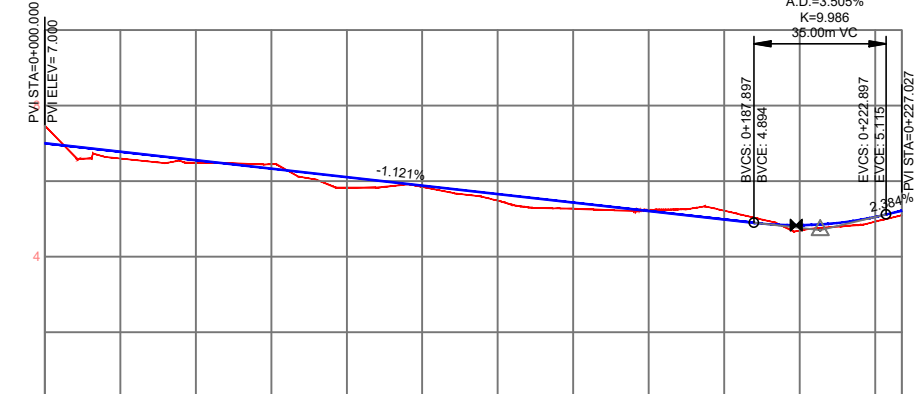
DATUM LEVEL 0.00	
HORIZONTAL ALIGNMENT	STRAIGHT L=98.681   STRAIGHT L=53.445   STRAIGHT L=46.953
CROSS FALL & SUPERELEVATION	LE=-2.50%   RE=-2.50%
VERTICAL GEOMETRY	G=0.765%   L=213.89
FINISHED ROAD LEVELS	5.418, 5.466, 5.519, 5.572, 5.625, 5.678, 5.731, 5.784, 5.837, 5.890, 5.943, 5.996, 6.049, 6.102, 6.155, 6.208, 6.261, 6.314, 6.367, 6.420, 6.473, 6.526, 6.579, 6.632, 6.685, 6.738, 6.791, 6.844, 6.897, 6.950, 6.974
EXISTING GROUND LEVELS	4.765, 4.902, 5.132, 5.348, 5.507, 5.766, 5.913, 6.215, 6.384, 6.285, 6.674, 6.818, 6.974
CHAINAGE	0+000.000, 0+020.000, 0+040.000, 0+060.000, 0+080.000, 0+100.000, 0+120.000, 0+140.000, 0+160.000, 0+180.000, 0+200.000, 0+217.144

SR06 0+000.000 to 0+217.144  
Scale 1:1000 Horz. 1:100 Vert.

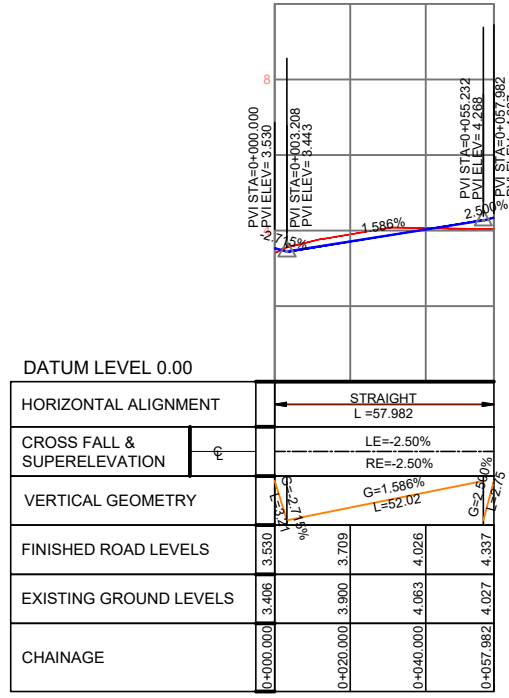


DATUM LEVEL 0.00	
HORIZONTAL ALIGNMENT	STRAIGHT L=22.669   STRAIGHT L=15.929   STRAIGHT L=22.669
CROSS FALL & SUPERELEVATION	LE=-2.50%   RE=-2.50%
VERTICAL GEOMETRY	G=0.619%   L=54.64
FINISHED ROAD LEVELS	5.625, 5.421, 5.544, 5.668, 5.816, 5.816
EXISTING GROUND LEVELS	5.140, 5.016, 5.181, 5.143, 5.445, 5.816
CHAINAGE	0+000.000, 0+020.000, 0+040.000, 0+060.000, 0+075.404

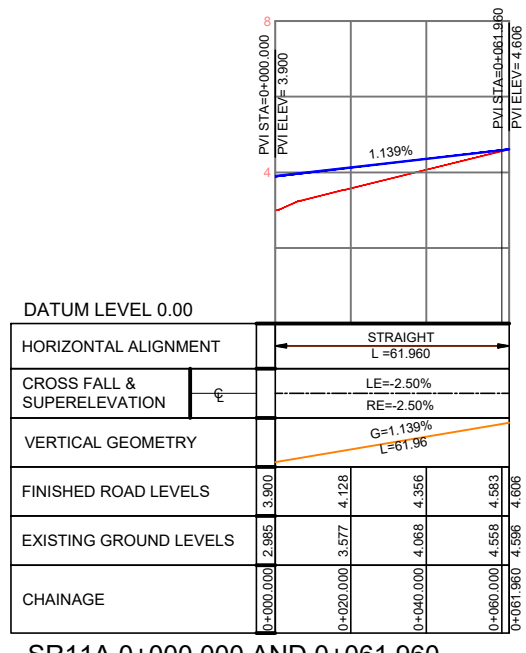
SR07 0+000.000 to 0+075.404  
Scale 1:1000 Horz. 1:100 Vert.



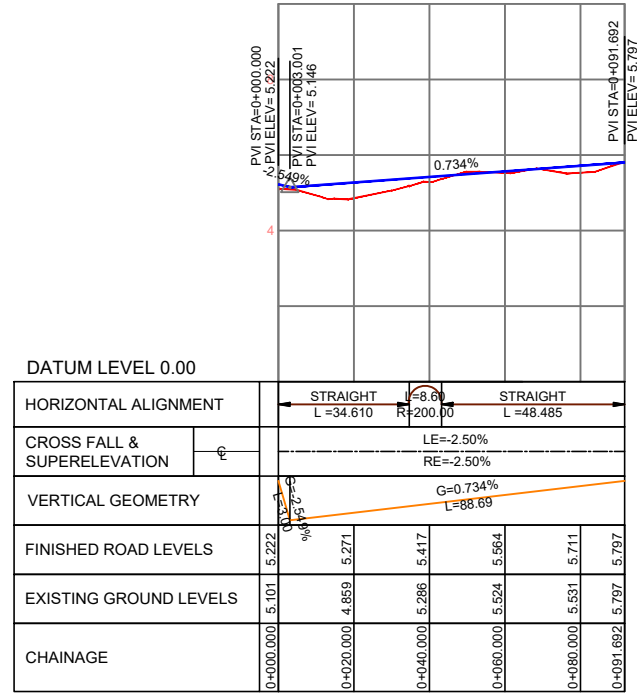
DATUM LEVEL 0.00	
HORIZONTAL ALIGNMENT	STRAIGHT L=119.962   STRAIGHT L=13.000   STRAIGHT L=97.96
CROSS FALL & SUPERELEVATION	LE=-2.50%   RE=-2.50%
VERTICAL GEOMETRY	G=-1.121%   L=187.90
FINISHED ROAD LEVELS	7.000, 6.776, 6.552, 6.327, 6.103, 5.879, 5.655, 5.431, 5.207, 4.982, 4.758, 4.534, 4.309, 4.085, 3.861, 3.637, 3.413, 3.189, 2.965, 2.741, 2.517, 2.293, 2.069, 1.845, 1.621, 1.397, 1.173, 0.949, 0.725, 0.501, 0.277, 0.053, -0.171, -0.395, -0.619, -0.843, -1.067, -1.291, -1.515, -1.739, -1.963, -2.187, -2.411, -2.635, -2.859, -3.083, -3.307, -3.531, -3.755, -3.979, -4.203, -4.427, -4.651, -4.875, -5.099, -5.323, -5.547, -5.771, -5.995, -6.219, -6.443, -6.667, -6.891, -7.115, -7.339, -7.563, -7.787, -8.011, -8.235, -8.459, -8.683, -8.907, -9.131, -9.355, -9.579, -9.803, -10.027, -10.251, -10.475, -10.699, -10.923, -11.147, -11.371, -11.595, -11.819, -12.043, -12.267, -12.491, -12.715, -12.939, -13.163, -13.387, -13.611, -13.835, -14.059, -14.283, -14.507, -14.731, -14.955, -15.179, -15.403, -15.627, -15.851, -16.075, -16.299, -16.523, -16.747, -16.971, -17.195, -17.419, -17.643, -17.867, -18.091, -18.315, -18.539, -18.763, -18.987, -19.211, -19.435, -19.659, -19.883, -20.107, -20.331, -20.555, -20.779, -21.003, -21.227, -21.451, -21.675, -21.899, -22.123, -22.347, -22.571, -22.795, -23.019, -23.243, -23.467, -23.691, -23.915, -24.139, -24.363, -24.587, -24.811, -25.035, -25.259, -25.483, -25.707, -25.931, -26.155, -26.379, -26.603, -26.827, -27.051, -27.275, -27.499, -27.723, -27.947, -28.171, -28.395, -28.619, -28.843, -29.067, -29.291, -29.515, -29.739, -29.963, -30.187, -30.411, -30.635, -30.859, -31.083, -31.307, -31.531, -31.755, -31.979, -32.203, -32.427, -32.651, -32.875, -33.099, -33.323, -33.547, -33.771, -33.995, -34.219, -34.443, -34.667, -34.891, -35.115, -35.339, -35.563, -35.787, -36.011, -36.235, -36.459, -36.683, -36.907, -37.131, -37.355, -37.579, -37.803, -38.027, -38.251, -38.475, -38.699, -38.923, -39.147, -39.371, -39.595, -39.819, -40.043, -40.267, -40.491, -40.715, -40.939, -41.163, -41.387, -41.611, -41.835, -42.059, -42.283, -42.507, -42.731, -42.955, -43.179, -43.403, -43.627, -43.851, -44.075, -44.299, -44.523, -44.747, -44.971, -45.195, -45.419, -45.643, -45.867, -46.091, -46.315, -46.539, -46.763, -46.987, -47.211, -47.435, -47.659, -47.883, -48.107, -48.331, -48.555, -48.779, -49.003, -49.227, -49.451, -49.675, -49.899, -50.123, -50.347, -50.571, -50.795, -51.019, -51.243, -51.467, -51.691, -51.915, -52.139, -52.363, -52.587, -52.811, -53.035, -53.259, -53.483, -53.707, -53.931, -54.155, -54.379, -54.603, -54.827, -55.051, -55.275, -55.499, -55.723, -55.947, -56.171, -56.395, -56.619, -56.843, -57.067, -57.291, -57.515, -57.739, -57.963, -58.187, -58.411, -58.635, -58.859, -59.083, -59.307, -59.531, -59.755, -59.979, -60.203, -60.427, -60.651, -60.875, -61.099, -61.323, -61.547, -61.771, -61.995, -62.219, -62.443, -62.667, -62.891, -63.115, -63.339, -63.563, -63.787, -64.011, -64.235, -64.459, -64.683, -64.907, -65.131, -65.355, -65.579, -65.803, -66.027, -66.251, -66.475, -66.699, -66.923, -67.147, -67.371, -67.595, -67.819, -68.043, -68.267, -68.491, -68.715, -68.939, -69.163, -69.387, -69.611, -69.835, -70.059, -70.283, -70.507, -70.731, -70.955, -71.179, -71.403, -71.627, -71.851, -72.075, -72.299, -72.523, -72.747, -72.971, -73.195, -73.419, -73.643, -73.867, -74.091, -74.315, -74.539, -74.763, -74.987, -75.211, -75.435, -75.659, -75.883, -76.107, -76.331, -76.555, -76.779, -77.003, -77.227, -77.451, -77.675, -77.899, -78.123, -78.347, -78.571, -78.795, -79.019, -79.243, -79.467, -79.691, -79.915, -80.139, -80.363, -80.587, -80.811, -81.035, -81.259, -81.483, -81.707, -81.931, -82.155, -82.379, -82.603, -82.827, -83.051, -83.275, -83.499, -83.723, -83.947, -84.171, -84.395, -84.619, -84.843, -85.067, -85.291, -85.515, -85.739, -85.963, -86.187, -86.411, -86.635, -86.859, -87.083, -87.307, -87.531, -87.755, -87.979, -88.203, -88.427, -88.651, -88.875, -89.099, -89.323, -89.547, -89.771, -89.995, -90.219, -90.443, -90.667, -90.891, -91.115, -91.339, -91.563, -91.787, -92.011, -92.235, -92.459, -92.683, -92.907, -93.131, -93.355, -93.579, -93.803, -94.027, -94.251, -94.475, -94.699, -94.923, -95.147, -95.371, -95.595, -95.819, -96.043, -96.267, -96.491, -96.715, -96.939, -97.163, -97.387, -97.611, -97.835, -98.059, -98.283, -98.507, -98.731, -98.955, -99.179, -99.403, -99.627, -99.851, -100.075, -100.3, -100.524, -100.748, -100.972, -101.196, -101.42, -101.644, -101.868, -102.092, -102.316, -102.54, -102.764, -102.988, -103.212, -103.436, -103.66, -103.884, -104.108, -104.332, -104.556, -104.78, -105.004, -105.228, -105.452, -105.676, -105.9, -106.124, -106.348, -106.572, -106.796, -107.02, -107.244, -107.468, -107.692, -107.916, -108.14, -108.364, -108.588, -108.812, -109.036, -109.26, -109.484, -109.708, -109.932, -110.156, -110.38, -110.604, -110.828, -111.052, -111.276, -111.5, -111.724, -111.948, -112.172, -112.396, -112.62, -112.844, -113.068, -113.292, -113.516, -113.74, -113.964, -114.188, -114.412, -114.636, -114.86, -115.084, -115.308, -115.532, -115.756, -115.98, -116.204, -116.428, -116.652, -116.876, -117.1, -117.324, -117.548, -117.772, -117.996, -118.22, -118.444, -118.668, -118.892, -119.116, -119.34, -119.564, -119.788, -120.012, -120.236, -120.46, -120.684, -120.908, -121.132, -121.356, -121.58, -121.804, -122.028, -122.252, -122.476, -122.7, -122.924, -123.148, -123.372, -123.596, -123.82, -124.044, -124.268, -124.492, -124.716, -124.94, -125.164, -125.388, -125.612, -125.836, -126.06, -126.284, -126.508, -126.732, -126.956, -127.18, -127.404, -127.628, -127.852, -128.076, -128.3, -128.524, -128.748, -128.972, -129.196, -129.42, -129.644, -129.868, -130.092, -130.316, -130.54, -130.764, -130.988, -131.212, -131.436, -131.66, -131.884, -132.108, -132.332, -132.556, -132.78, -133.004, -133.228, -133.452, -133.676, -133.9, -134.124, -134.348, -134.572, -134.796, -135.02, -135.244, -135.468, -135.692, -135.916, -136.14, -136.364, -136.588, -136.812, -137.036, -137.26, -137.484, -137.708, -137.932, -138.156, -138.38, -138.604, -138.828, -139.052, -139.276, -139.5, -139.724, -139.948, -140.172, -140.396, -140.62, -140.844, -141.068, -141.292, -141.516, -141.74, -141.964, -142.188, -142.412, -142.636, -142.86, -143.084, -143.308, -143.532, -143.756, -143.98, -144.204, -144.428, -144.652, -144.876, -145.1, -145.324, -145.548, -145.772, -145.996, -146.22, -146.444, -146.668, -146.892, -147.116, -147.34, -147.564, -147.788, -148.012, -148.236, -148.46, -148.684, -148.908, -149.132, -149.356, -149.58, -149.804, -150.028, -150.252, -150.476, -150.7, -150.924, -151.148, -151.372, -151.596, -151.82, -152.044, -152.268, -152.492, -152.716, -152.94, -153.164, -153.388, -153.612, -153.836, -154.06, -154.284, -154.508, -154.732, -154.956, -155.18, -155.404, -155.628, -155.852, -156.076, -156.3, -156.524, -156.748, -156.972, -157.196, -157.42, -157.644, -157.868, -158.092, -158.316, -158.54, -158.764, -158.988, -159.212, -159.436, -159.66, -159.884, -160.108, -160.332, -160.556, -160.78, -161.004, -161.228, -161.452, -161.676, -161.9, -162.124, -162.348, -162.572, -162.796, -163.02, -163.244, -163.468, -163.692, -163.916, -164.14, -164.364, -164.588, -164.812, -165.036, -165.26, -165.484, -165.708, -165.932, -166.156, -166.38, -166.604, -166.828, -167.052, -167.276, -167.5, -167.724, -167.948, -168.172, -168.396, -168.62, -168.844, -169.068, -169.292, -169.516, -169.74, -169.964, -170.188, -170.412, -170.636, -170.86, -171.084, -171.308, -171.532, -171.756, -171.98, -172.204, -172.428, -172.652, -172.876, -173.1, -173.324, -173.548, -173.772, -174.0, -174.224, -174.448, -174.672, -174.896, -175.12, -175.344, -175.568, -175.792, -176.016, -176.24, -176.464, -176.688, -176.912, -177.136, -177.36, -177.584, -177.808, -178.032, -178.256, -178.48, -178.704, -178.928, -179.152, -179.376, -179.6, -179.824, -180.048, -180.272, -180.496, -180.72, -180.944, -181.168, -181.392, -181.616, -181.84, -182.064, -182.288, -182.512, -182.736, -182.96, -183.184, -183.408, -183.632, -183.856, -184.08, -184.304, -184.528, -184.752, -184.976, -185.2, -185.424, -185.648, -185.872, -186.096, -186.32, -186.544, -186.768, -186.992, -187.216, -187.44, -187.664, -187.888, -188.112, -188.336, -188.56, -188.784, -189.008, -189.232, -189.456, -189.68, -189.904, -190.128, -190.352, -190.576, -190.8, -191.024, -191.248, -191.472, -191.696, -191.92, -192.144, -192.368, -192.592, -192.816, -193.04, -193.264, -193.488, -193.712, -193.936, -194.16, -194.384, -194.608, -194.832, -195.056, -195.28, -195.504, -195.728, -195.952, -196.176, -196.4, -196.624, -196.848, -197.072, -197.296, -197.52, -197.744, -197.968, -198.192, -198.416, -198.64, -198.864, -199.088, -199.312, -199.536, -199.76, -199.984, -200.208, -200.432, -200.656, -200.88, -201.104, -201.328, -201.552, -201.776, -202.0, -202.224, -202.448, -202.672, -202.896, -203.12, -203.344, -203.568, -203.792, -204.016, -204.24, -204.464, -204.688, -204.912, -205.136, -205.36, -205.584, -205.808, -206.032, -206.256, -206.48, -206.704, -206.928, -207.152, -207.376, -207.6, -207.824, -208.048, -208.272, -208.496, -208.72, -208.944, -209.168, -209.392, -209.616, -209.84, -210.064, -210.288, -210.512, -210.736, -210.96, -211.184, -211.408, -211.632, -211.856, -212.08, -212.304, -212.528, -212.752, -212.976, -213.2, -213.424, -213.648, -213.872, -214.096, -214.32, -214.544, -214.768, -214.992, -215.216, -215.44, -215.664, -215.888, -216.112, -216.336, -216.56, -216.784, -217.008, -217.232, -217.456, -217.68, -217.904, -218.128, -218.352, -218.576, -218.8, -219.024, -219.248, -219.472, -219.696, -219.92, -220.144, -220.368, -220.592, -220.816, -221.04, -221.264, -221.488, -221.712, -221.936, -222.16, -222.384, -222.608, -222.832, -223.056, -223.28, -223.504, -223.728, -223.952, -224.176, -224.4, -224.624, -224.848, -225.072, -225.296, -225.52, -225.744, -225.968, -226.192, -226.416, -226.64, -226.864, -227.088, -227.312, -227.536, -227.76, -227.984, -228.208, -228.432, -228.656, -228.88, -229.104, -229.328, -229.552, -229.776, -230.0, -230.224, -230.448, -230.672, -230.896, -231.12, -231.344, -231.568, -231.792, -232.016, -232.24, -232.464, -232.688, -232.912, -233.136, -233.36, -233.584, -233.808, -234.032, -234.256, -234.48, -234.704, -234.928, -235.152, -235.376, -235.6, -235.824, -236.048, -236.272, -236.496, -236.72, -236.944, -237.168, -237.392, -237.616, -237.84, -238.064, -238.288, -238.512, -238.736, -238.96, -239.184, -239.408, -239.632, -239.856, -240.08, -240.304, -240.528, -240.752, -240.976, -241.2, -241.424, -241.648, -241.872, -242.096, -242.32, -242.544, -242.768, -242.992, -243.216, -243.44, -243.664, -243.888, -244.112, -244.336, -244.56, -244.784, -245.008, -245.232, -245.456, -245.68, -245.904, -246.128, -246.352, -246.576, -246.8, -247.024, -247.248, -247.472, -247.696, -247.92, -248.144, -248.368, -248.592, -248.816, -249.04, -249.264, -249.488, -249.712, -249.936, -250.16, -250.384, -250.608, -250.832, -251.056, -251.28, -251.504, -251.728, -251.952, -252.176, -252.4, -252.624, -252.848, -253.072, -253.296, -253.52, -253.744, -253.968, -254.192, -254.416, -254.64, -254.864, -255.088, -255.312, -255.536, -255.76, -255.984, -256.208, -256.432, -256.656, -256.88, -257.104, -257.328, -257.552, -257.776, -258.0, -258.224, -258.448, -258.672, -258.896, -259.12, -259.344, -259.568, -259.792, -260.016, -260.24, -260.464, -260.688, -260.912, -261.136, -261.36, -261.584, -261.808, -262.032, -262.256, -262.48, -262.704, -262.928, -263.152, -263.376, -263.6, -263.824, -264.048, -264.272, -264.496, -264.72, -264.944, -265.168, -265.392, -265.616, -265.84, -266.064, -266.288, -266.512, -266.736, -266.96, -267.184, -267.408, -267.632, -267.856, -268.08, -268.304, -268.528, -268.752, -268.976, -269.2, -269.424, -269.648, -269.872, -270.096, -270.32, -270.544, -270.768, -270.992, -2



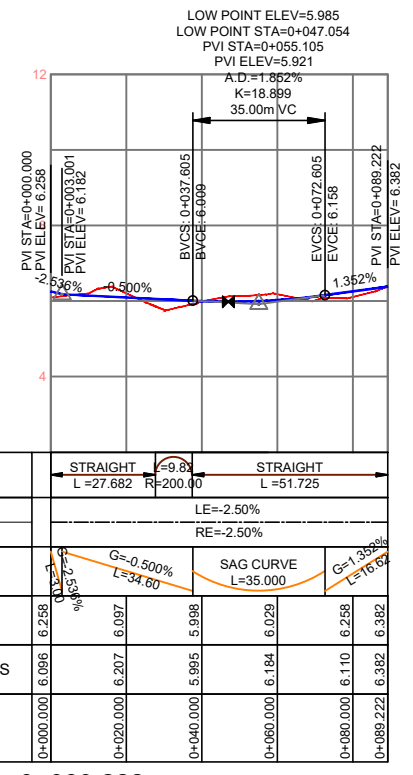
SR11 0+000.000 AND 0+057.982



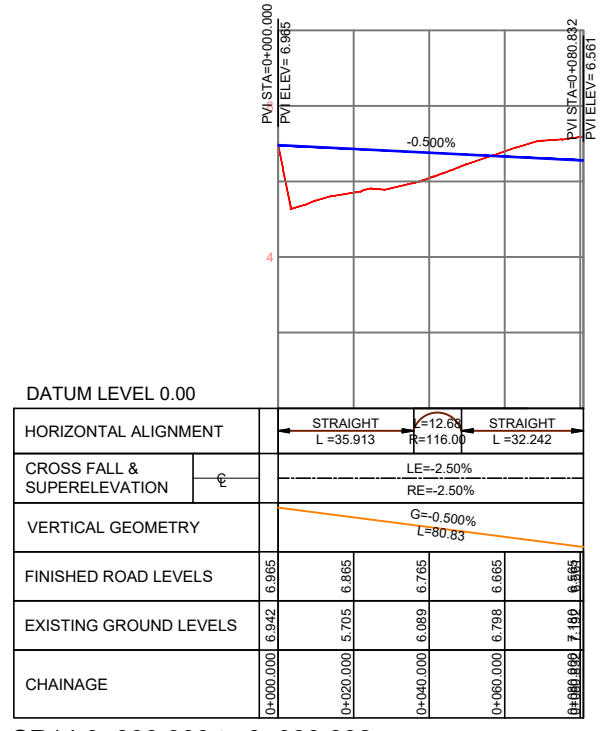
SR11A 0+000.000 AND 0+061.960



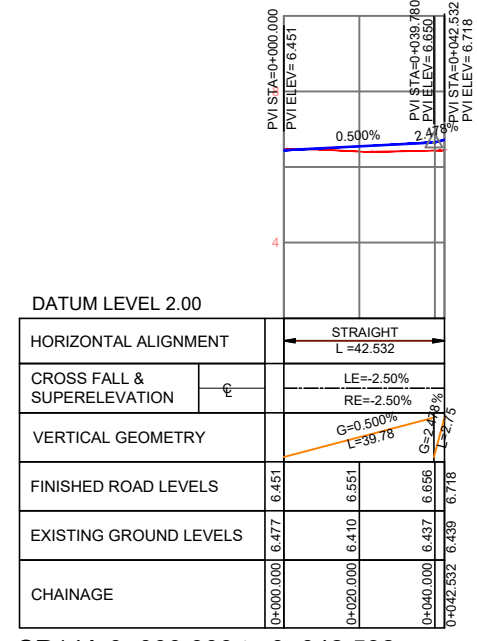
SR12 0+000.000 to 0+091.692  
Scale 1:1000 Horz. 1:100 Vert.



SR13 0+000.000 to 0+089.222  
Scale 1:1000 Horz. 1:100 Vert.



SR14 0+000.000 to 0+080.832  
Scale 1:1000 Horz. 1:100 Vert.



SR14A 0+000.000 to 0+042.532  
Scale 1:1000 Horz. 1:100 Vert.

R:\MCW1088 - BAM Castlelake Residential D\p18.0 Drawings\GEMC\W1088-RPS-00-XX-DR-C-GE0101.dwg

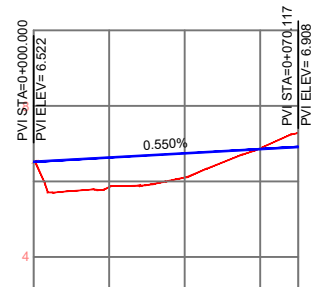


General Notes  
 (i) Hard copies, dwf and pdf will form a controlled issue of the drawing. All other formats (dwg etc.) are deemed to be an uncontrolled issue and any work carried out based on these files is at the recipient's own risk. RPS will not accept any responsibility for any errors from the use of these files, either by human error by the recipient, listing of the un-dimensioned measurements, compatibility with the recipient's software, and any errors arising when these files are used to aid the recipient's drawing production, or setting out on site.  
 (ii) DO NOT SCALE, use figured dimensions only.  
 (iii) This drawing is the property of RPS, it is a project confidential classified document. It must not be copied used or its contents divulged without prior written consent. The needs and expectations of client and RPS must be considered when working with this drawing.  
 (iv) Information including topographical survey, geotechnical investigation and utility detail used in the design have been provided by others.  
 (v) All Levels refer to Ordnance Survey Datum, Malin Head.

Rev	Date	Drawn	Checked	Amendment / Issue	App
S4 P01	08/06/22			Issue for Planning	
S3 P01	23/05/22			Issue for Review and Comment	
P01	26/10/21			Pre-Planning Submission	



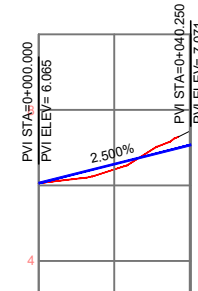
Client	As Shown @ A1 Half @ A3	Project	Castlelake SHD
Created on	13/10/2021	Title	Geometrics Side Road SR11 To SR14A Profiles
Sheets	04 of 05	Status	S4
Model File Identifier	MCW1088-RPS-00-XX-DR-C-GE0101	File Identifier	MCW1088-RPS-00-XX-DR-C-GE0101-05
Rev	P01	Rev	P01



DATUM LEVEL 2.00

HORIZONTAL ALIGNMENT	STRAIGHT L=21.530	LE=16.70 R=157.00	STRAIGHT L=31.828
CROSS FALL & SUPERELEVATION	LE=-2.50% RE=-2.50%		
VERTICAL GEOMETRY	G=0.550% L=70.12		
FINISHED ROAD LEVELS	6.522	6.632	6.742
EXISTING GROUND LEVELS	6.509	6.843	6.099
CHAINAGE	0+000.000	0+020.000	0+040.000

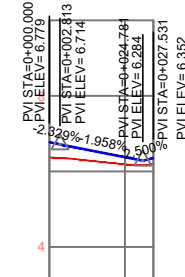
SR15 0+000.000 to 0+070.117  
Scale 1:1000 Horz. 1:100 Vert.



DATUM LEVEL 2.00

HORIZONTAL ALIGNMENT	STRAIGHT L=40.250
CROSS FALL & SUPERELEVATION	LE=-2.50% RE=-2.50%
VERTICAL GEOMETRY	G=2.500% L=40.25
FINISHED ROAD LEVELS	6.065
EXISTING GROUND LEVELS	6.423
CHAINAGE	0+000.000

SR15A 0+000.000 AND 0+040.250  
Scale 1:1000 Horz. 1:100 Vert.



DATUM LEVEL 2.00

HORIZONTAL ALIGNMENT	STRAIGHT L=27.531
CROSS FALL & SUPERELEVATION	LE=-2.50% RE=-2.50%
VERTICAL GEOMETRY	G=1.950% L=27.531
FINISHED ROAD LEVELS	6.779
EXISTING GROUND LEVELS	6.185
CHAINAGE	0+000.000

SR15B 0+000.000 to 0+027.531  
Scale 1:1000 Horz. 1:100 Vert.

Client



General Notes

- (i) Hard copies, dwf and pdf will form a controlled issue of the drawing. All other formats (dwg etc.) are deemed to be an uncontrolled issue and any work carried out based on these files is at the recipients own risk. RPS will not accept any responsibility for any errors from the use of these files, either by human error by the recipient, listing of the un-dimensioned measurements, compatibility with the recipients software, and any errors arising when these files are used to aid the recipients drawing production, or setting out on site.
- (ii) DO NOT SCALE, use figured dimensions only.
- (iii) This drawing is the property of RPS, it is a project confidential classified document. It must not be copied used or its contents divulged without prior written consent. The needs and expectations of client and RPS must be considered when working with this drawing.
- (iv) Information including topographical survey, geotechnical investigation and utility detail used in the design have been provided by others.
- (v) All Levels refer to Ordnance Survey Datum, Malin Head.

Rev	Date	Drawn	Checked	Amendment / Issue	App
S4	08/06/22	PER	PER	Issue for Planning	⊞
S3	23/05/22	PER	PER	Issue for Review and Comment	⊞
P01	26/10/21	PER	PER	Pre-Planning Submission	⊞



Scale	As Shown @ A1 Half @ A3	Project	Castlelake SHD
Created on	13/10/2021	Title	Geometrics Side Road SR15 To SR15B Profiles
Sheets	05 of 05	Status	S4
Model File Identifier	MCW1088-RPS-00-XX-DR-C-GE0101	Rev	P01